



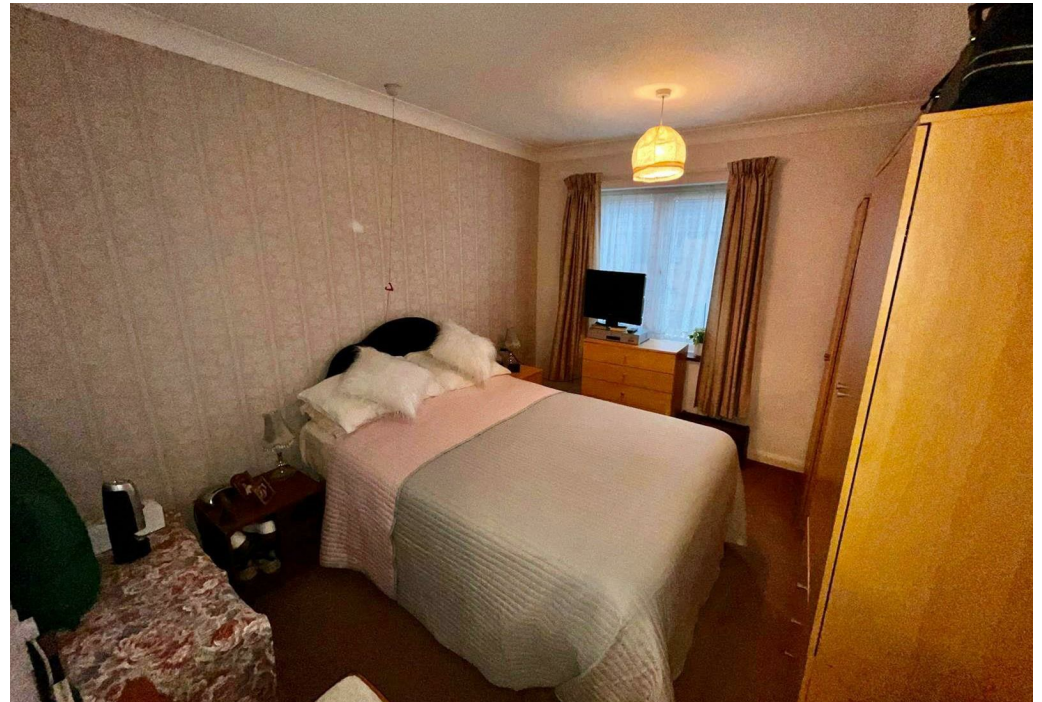
Ashley Court, Hatfield, AL10 0RW


Flat | 2 Bedrooms

£150,000 Leasehold

**LARKHAM  
PIKE &**

[www.larkhamandpike.co.uk](http://www.larkhamandpike.co.uk)



Energy Efficiency Rating		
	Current	Potential
Very energy efficient - lower running costs		
(92 plus) <b>A</b>		
(81-91) <b>B</b>	81	84
(69-80) <b>C</b>		
(55-68) <b>D</b>		
(39-54) <b>E</b>		
(21-38) <b>F</b>		
(1-20) <b>G</b>		
Not energy efficient - higher running costs		
<b>England &amp; Wales</b>	EU Directive 2002/91/EC	

### First Floor

Approx. 54.8 sq. metres (590.3 sq. feet)



Total area: approx. 54.8 sq. metres (590.3 sq. feet)

Sketch layout only. This plan is not drawn to scale and is for identification purposes only. Produced for Larkham & Pikes Estate Agents. Plan produced using PlanUp.